

# SHENZHEN CONCERT HALL

SHENZHEN, CHINA  
2007

**NAGATA  
ACOUSTICS**

|                      |                       |
|----------------------|-----------------------|
| Acoustic Consultant: | Nagata Acoustics      |
| Architect:           | Arata Isozaki Atelier |
| Owner:               | City of Shenzhen      |
| Construction Cost:   | 650 million RMB       |

In the city of Shenzhen, China, where the city's status as a Special Economic Zone has been a catalyst of rapid and remarkable growth, the new Shenzhen Concert Hall complex opened in October, 2007. Arata Isozaki Atelier was selected for the honor of designing for the new Culture Center complex, composed of the concert hall and library. Nagata Acoustics participated on the concert hall project as the acoustical consultant.

The complex contains the Symphony Hall with 1,576 audience seats, the Theatre Studio with 400-580 seats and some rehearsal rooms. The Symphony Hall has a vineyard configuration with a steep audience block arrangement, termed a "canyon terrace." At the largest point of the audience seating, the room spans 45m wide and 60m long, and has a ceiling height of 25 m. Ensemble reflector panels made of polycarbonate are suspended at the height of approximately 14m above the stage.

## BUILDING DETAILS AND ACOUSTIC DATA

Location Fuzhong 1st Road, Futian,  
Shenzhen, Guangdong, China

Building Size 8853.8 m<sup>2</sup>

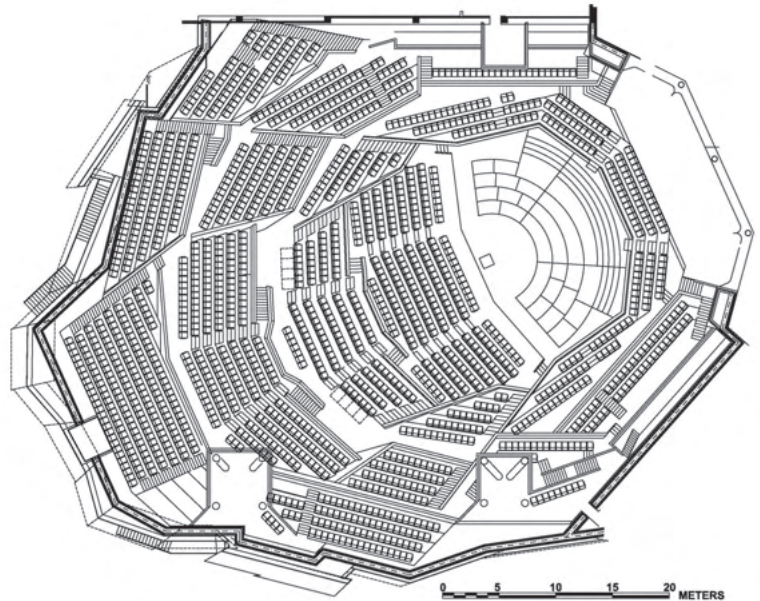
### Concert Hall:

Seating Capacity 1,576  
Room Volume 25,000 m<sup>3</sup>  
Reverberation Time (Mid-Frequency)  
Unoccupied 2.2 sec  
Occupied 2.0 sec

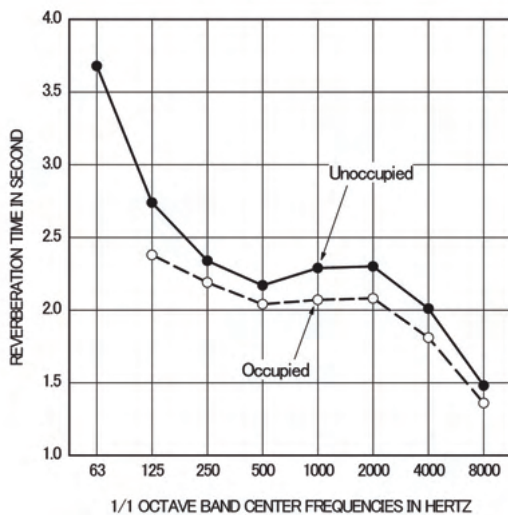
### Finish Materials

Ceiling : Concrete  
Walls : LC Panel, Wood rib  
Aud. Floor : Wood flooring on concrete  
Stage Floor : Hinoki Japanese cypress

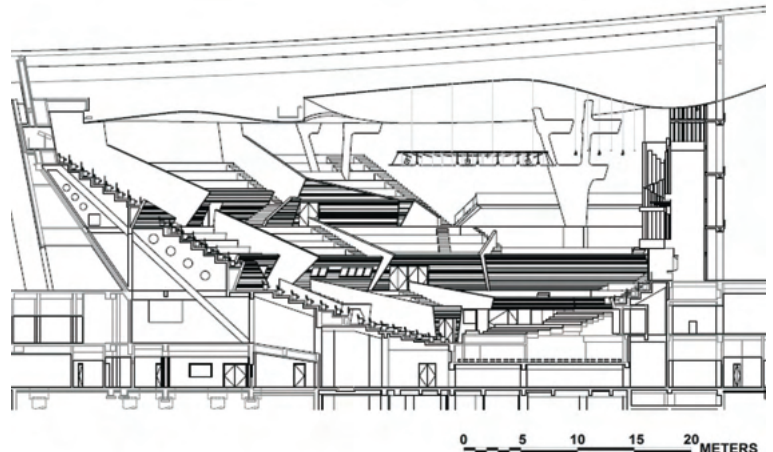
Noise Level: NC < 15



PLAN



REVERBERATION TIME



LONGITUDINAL SECTION

# SHENZHEN CONCERT HALL

SHENZHEN, CHINA  
2007

NAGATA  
ACOUSTICS

