

Acoustics Consultant:	NAGATA ACOUSTICS, Inc.
Architect:	AXS SATOW Inc.
Owners:	Katsushika Ward
Theatre Consultant:	Theater Engineering Institute
Sound & Communications:	NAGATA ACOUSTICS, Inc.
Construction Cost:	¥ 10,600 Million JPY

The Katsushika Symphony Hills is a cultural building with a large hall, a small hall, an exhibition hall, three music practice rooms, and ancillary rooms.

The large hall, named Mozart Hall (1,318 seats) was designed as a multi-purpose hall, but with an emphasis on the performances of classical music.

The Mozart Hall's audience seating includes a balcony. However, unlike traditional shoebox configuration balconies, the side portions of the balcony are inclined toward the stage so as to maximize the sight lines of these seats.

A three parts sliding orchestra shell is installed on the stage of the Mozart Hall.

Acoustical shells (large for orchestra and small for recital) make a maximum contribution visually as well as acoustically to the conversion from a stage rigged for theatrical scenery and an auditorium, (the seating geometry of which is designed for use as a proscenium theatre), to a stage for a concert hall in which the musical sound source must share the same acoustical and visual volume as the audience.

The shells, consisting of three telescoping flat arches, are an automated compression structure.

The small hall named Iris Hall (298 seats) has flat level flooring and is located on the first underground level of the building. In order to provide effective sound isolation between the small hall and the large hall nearby, we adopted a floating sound isolation structure for the small hall.

Anticipating that the Iris Hall will be used as a multipurpose space, the Iris Hall is designed so that it can be used as a flat level floor for such performances.

BUILDING DETAILS AND ACOUSTICS DATA

Location 6-365 Tateishi Katsushika-ku

Tokyo, Japan

Tel 03-5670-2222

Seating Capacity 1,318 seats

Room Volume 12,500CM

Surface Area 3,970SM

Stage Area 200SM

Reverberation Time (Mid-Frequency)

Unoccupied 2.0 sec

Occupied 1.8 sec

Finishing Materials

Ceiling : GRC panel

Wall : granite stone panel

Floor : flooring block

Seat : Upholstered

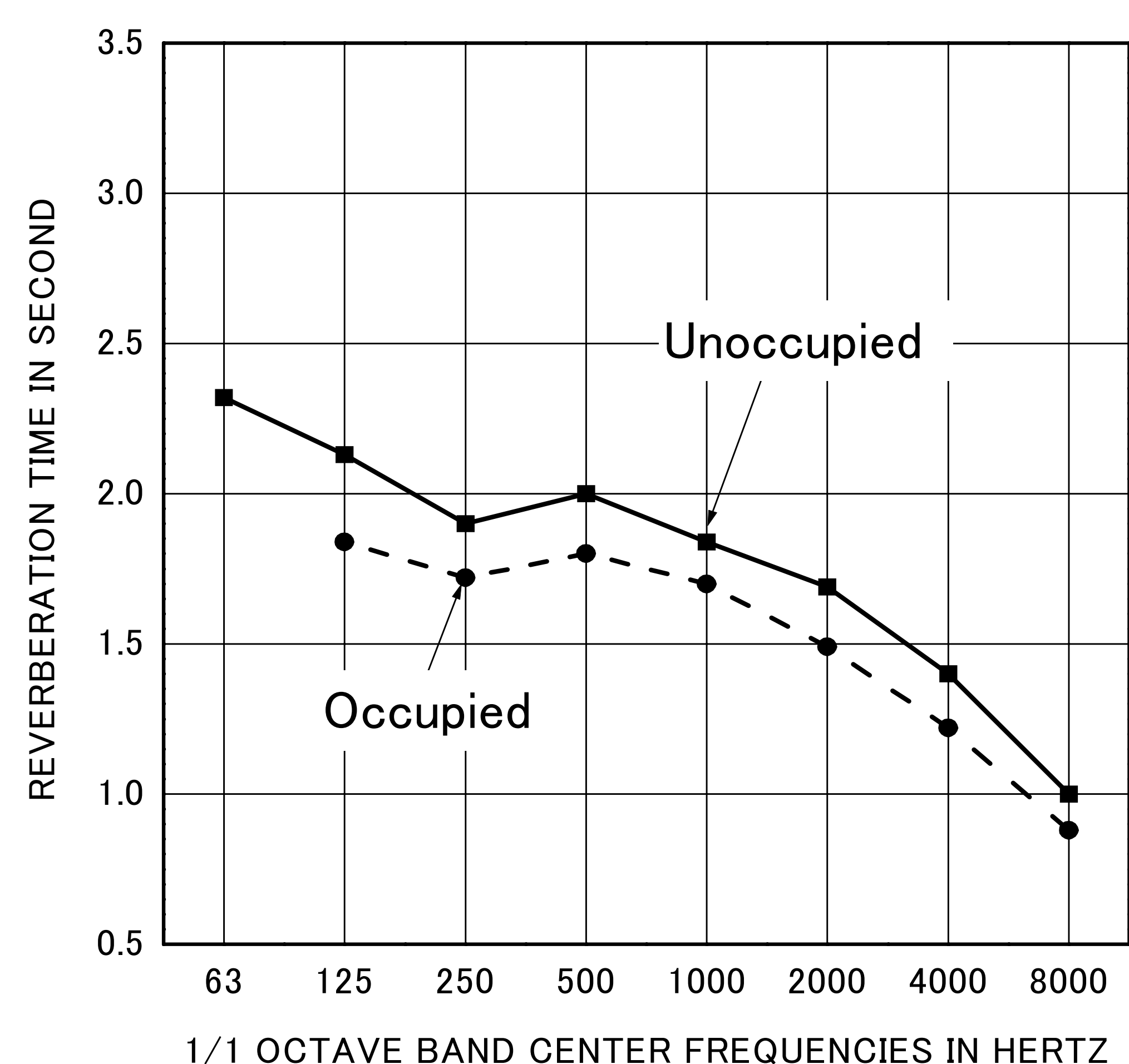
Miscellaneous : sliding orchestra shell

Noise Level : NC-20

Other Facilities : Iris Hall, Rehearsal Room, Art Gallery

Total Cost : ¥ 10,561 Million JPY

Total Floor Area : 14,045SM

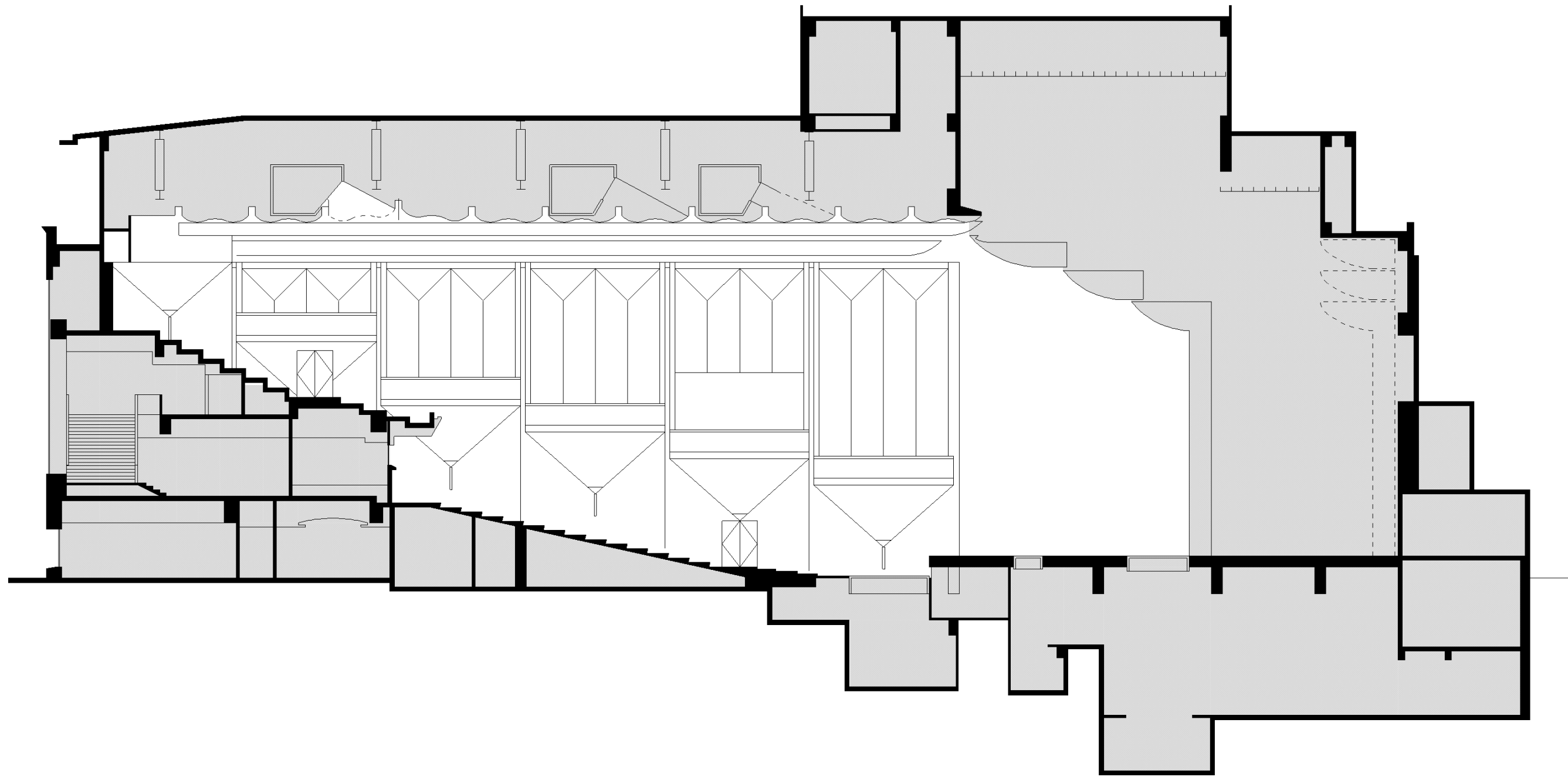


REVERBERATION TIME

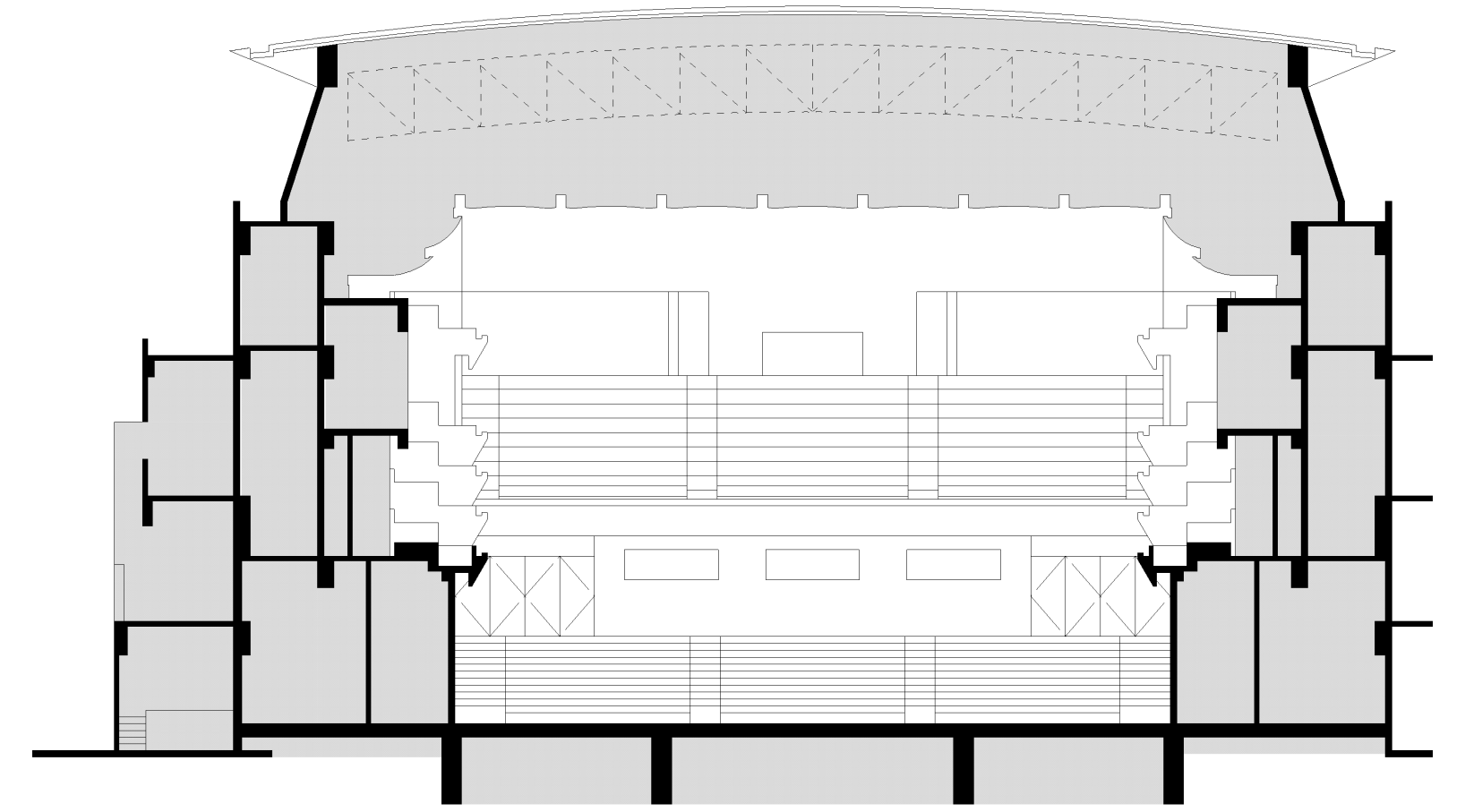
KATSUSHIKA SYMPHONY HILLS

TOKYO, JAPAN
1992

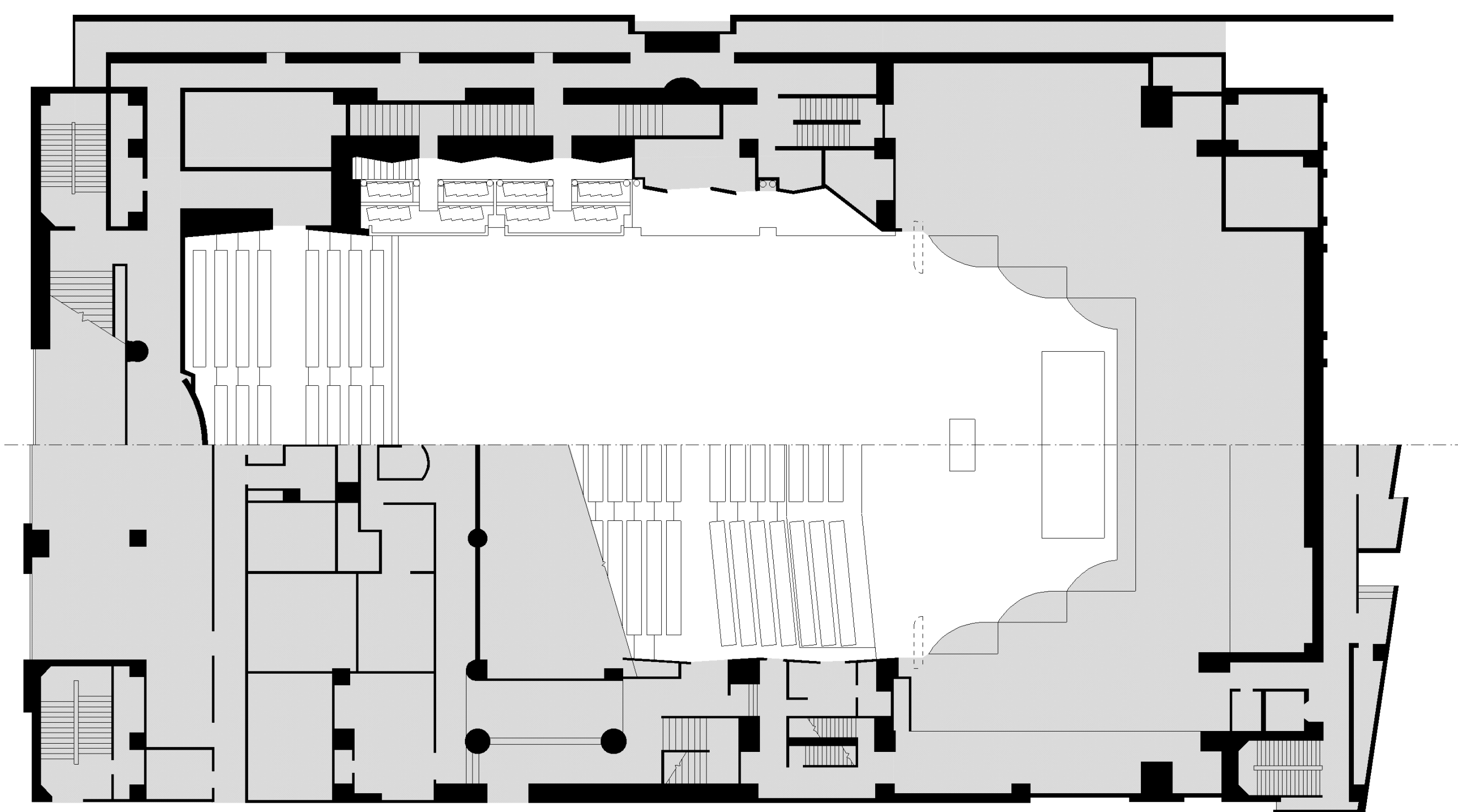
NAGATA
ACOUSTICS



LONGITUDINAL SECTION



TRANSVERS SECTION



0 5 10 15 20 METERS

PLAN

