

Acoustics Consultant:	NAGATA ACOUSTICS, Inc.
Architect:	Arata Isozaki & Associates
Owners:	Yamaguchi Prefecture
Sound & Communications:	NAGATA ACOUSTICS, Inc.
Other Contributors:	Toshio Hosokawa (composer, adviser) André Richard (composer, adviser)
Construction Cost:	7,800 Million JPY

Akiyoshidai International Art Village is a quite unique facility where artists create original works, rehearse and perform them during their stay there as "Artists in residence". The new Art Village was built in a valley located east of Akiyoshidai, which is famous for its karst geological formations. The facility is surrounded on three sides by mountains, gracefully and naturally isolating it from the effects of man-made noise.

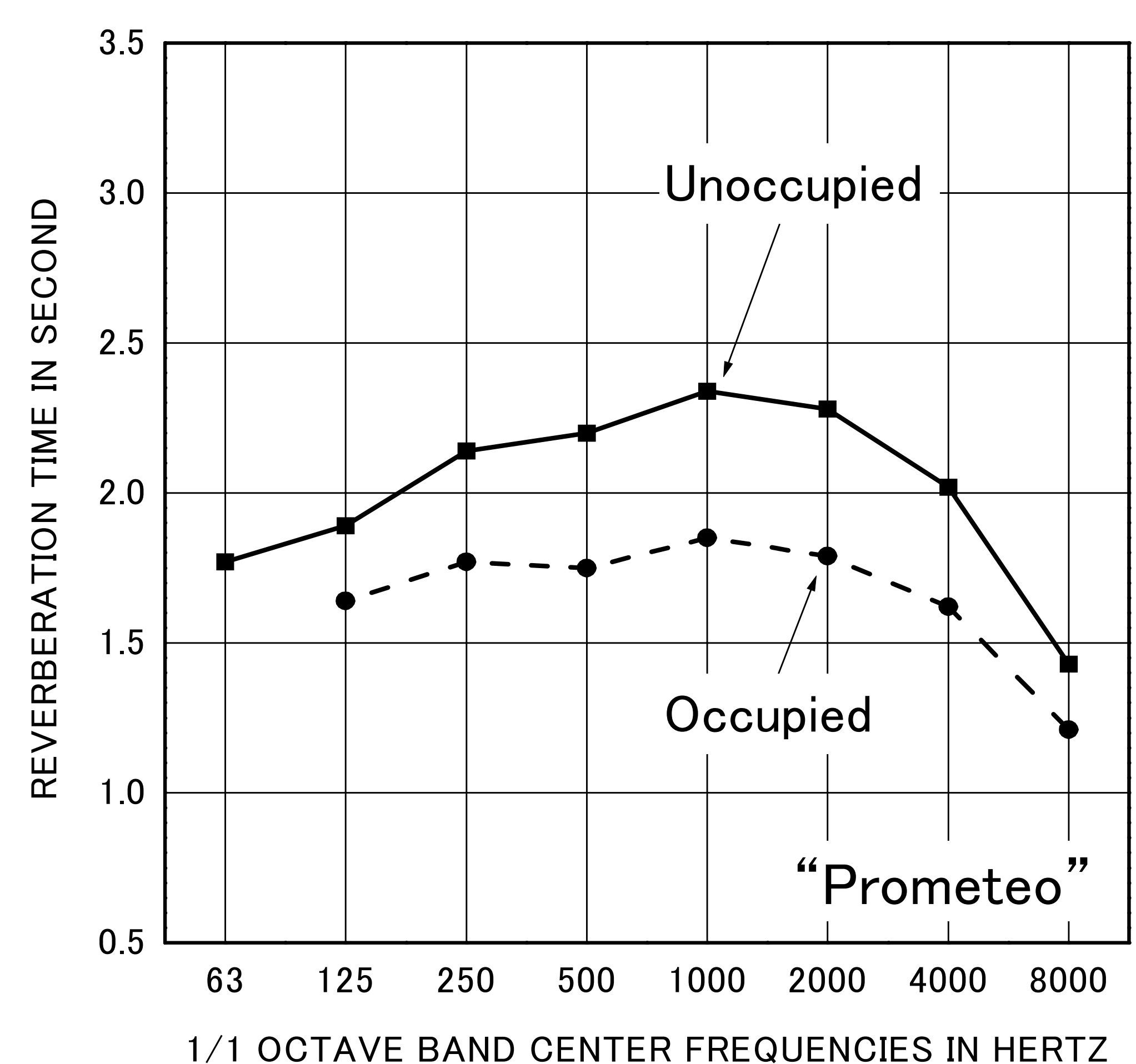
The village was opened at the 10th Akiyosidai International Contemporary Music Seminar and Festival in the summer of 1998. Luigi Nono's "Prometeo", which premiered in Japan, was conceived for performance in the new concert hall of the village. For "Prometeo" the audience is surrounded by four orchestral ensembles, a chorus, instrumental and vocal soloists, and a narrator on platforms forming a double spiral. Twelve loudspeakers, also spirally arranged inside of the players' spirals, individually pick up players' sounds which are then reproduced after simultaneous digital processing, which is called "Live Electronics". The audience, seated inside the spirals, hears the performance from multiple directions.

The hall has a zigzag plan. The flat main floor is surrounded by stepwise platforms permitting the relation between playing position and audience to be flexibly arranged. Based on studying the project's performance practice and attending the eighth festival, the following acoustical matters were proposed: (1) ceiling height of 12m for getting richness and spaciousness; (2) NC-15 for listening quietness; (3) a sufficient number of connectors for microphones and loudspeakers to enable a flexible setting of theatrical equipment.

Interior finishes of the hall are designed to be reflective. In consultation with Mr. André Richard, the chief digital acoustic professional of Live Electronics, the ideal reverberation time for "Prometeo" was determined to be approximately 1.8 seconds. The reverberation time of the hall is 1.8 seconds under the occupied condition with the stage and seating placement for the "Prometeo" production.

### BUILDING DETAILS AND ACOUSTICS DATA

Location	50, Nakayamada, Akiyoshi Shuho-cho, Mine-gun, Yamaguchi, 754-0511, Japan
Tel	0837-63-0020
Seating Capacity	300 - 480
Room Volume	5,880 CM
Surface Area	3,080 SM
Reverberation Time (Mid-Frequency)	
Unoccupied	2.2 sec
Occupied	1.8 sec
Finishing Materials	
Ceiling	: 2 layers of gypsum board 9.5 + 12.5 mm
Wall	: 3 layers of fiber reinforced gypsum board (8 mm x 3),
Floor	: 65 mm flooring joist supported 45 mm flooring on concrete
Seat	: Upholstered
Noise Level	: NC - 15
Other Facilities	: 7 studios, 3 seminar rooms, visitor house
Total Cost	: 7,800 Million JPY



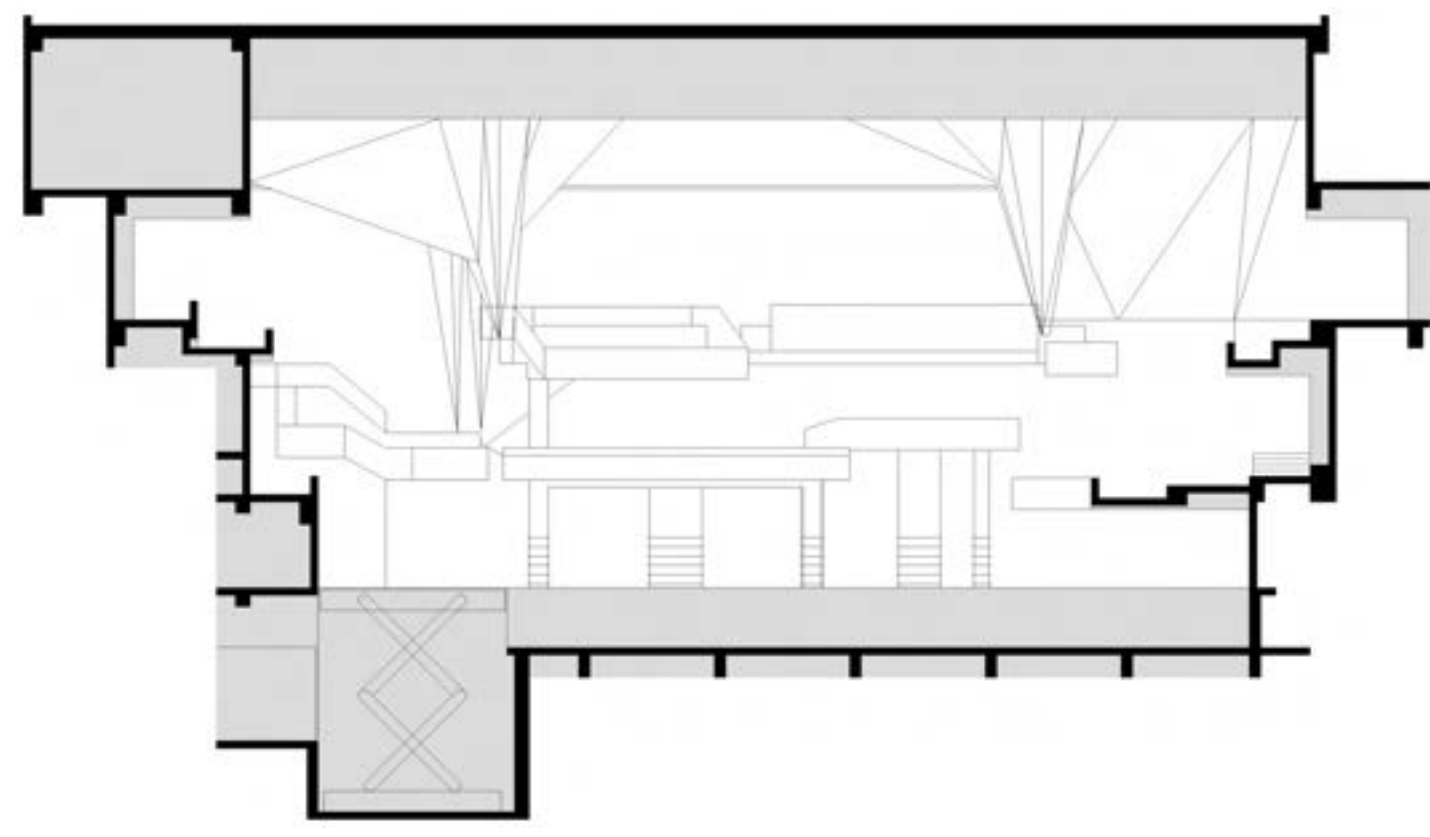
### REVERBERATION TIME

# AKIYOSHIDAI INTERNATIONAL ART VILLAGE HALL

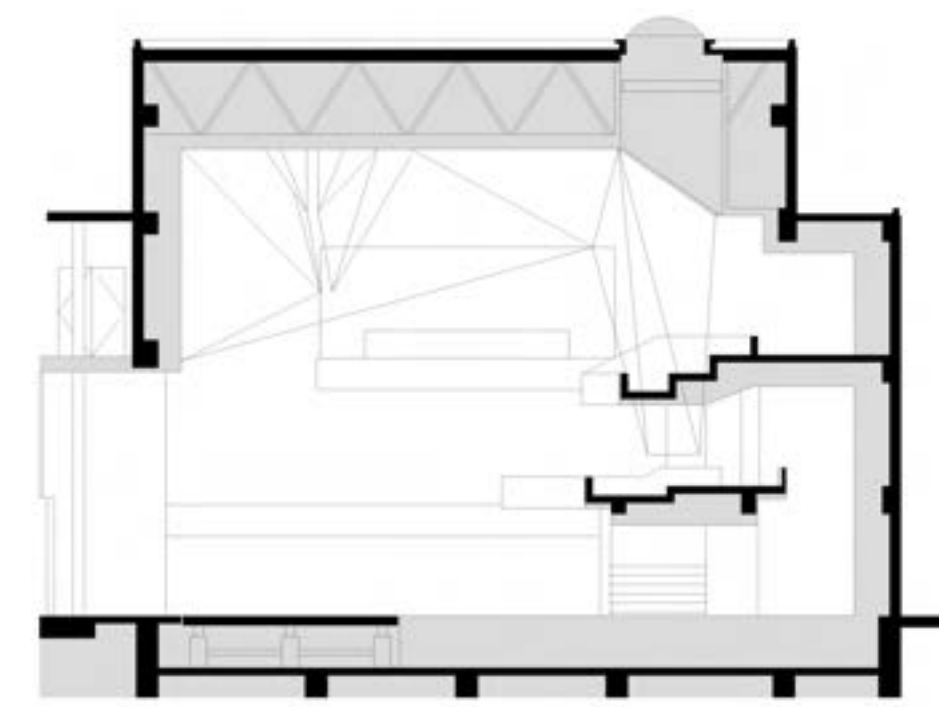
YAMAGUCHI, JAPAN

1998

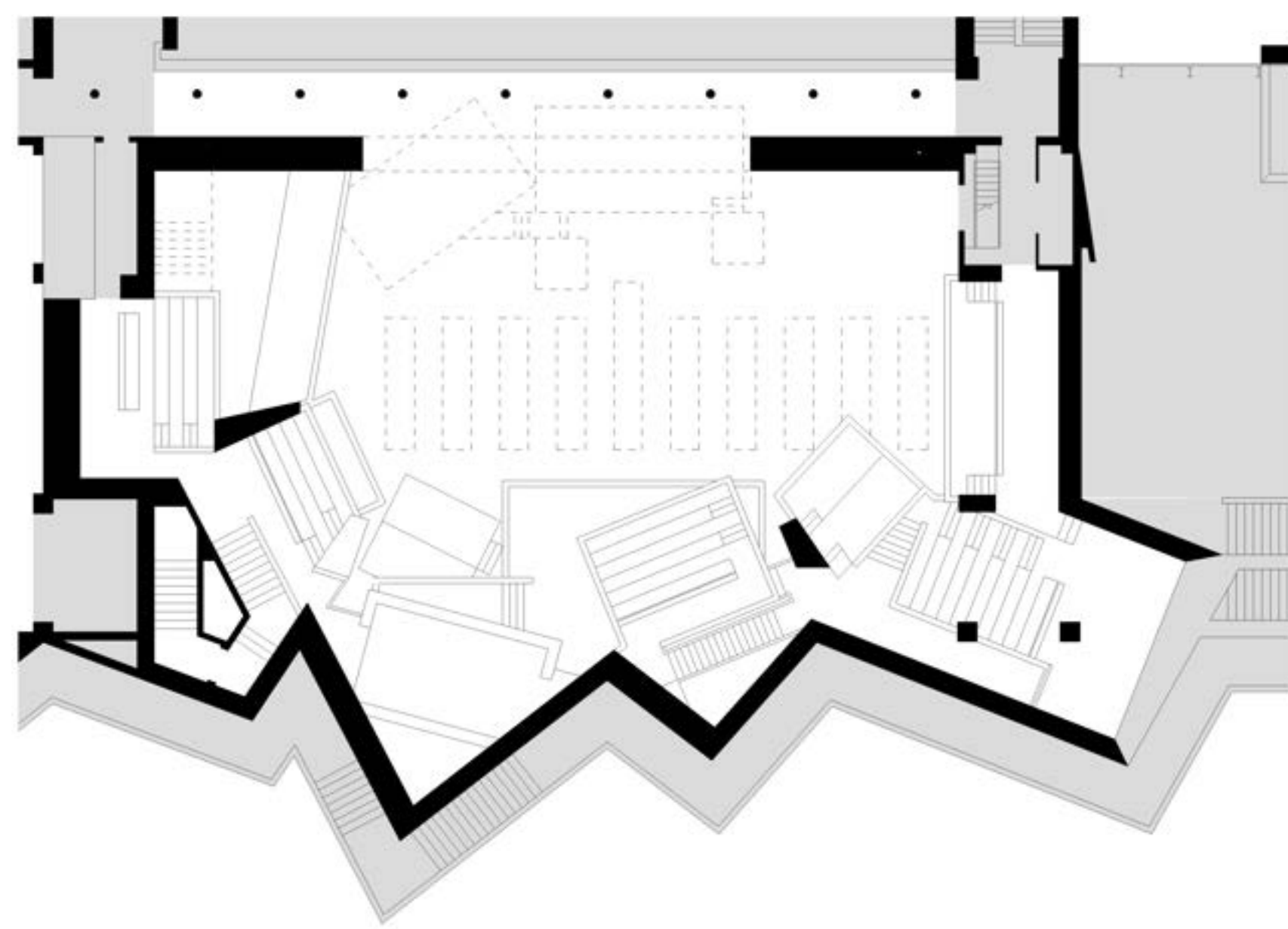
NAGATA  
ACOUSTICS



LONGITUDINAL SECTION



TRANSVERS SECTION



0 5 10 15 20 METERS

PLAN



Prometeo setting

