

Acoustic Consultant:

Nagata Acoustics
Robert F. Mahoney and Associates

Architect:

Pfeiffer Partners Architects

Theatre Consultant:

Theatre Projects Consultants

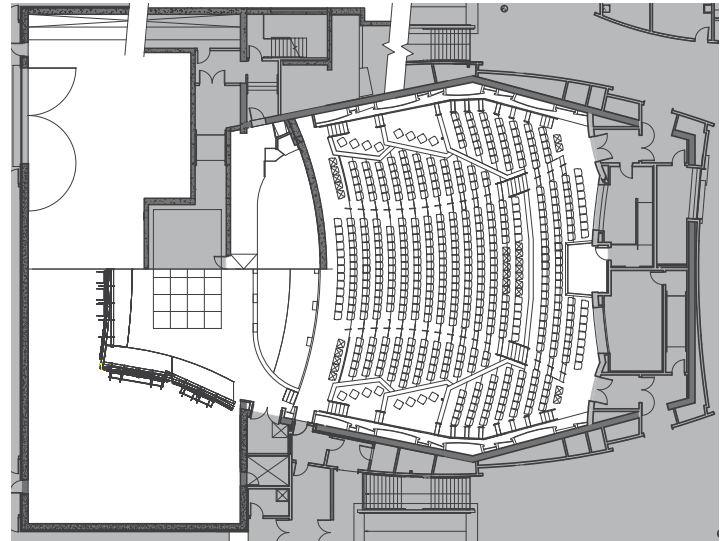
Owner:

Chapman University

Construction Cost:

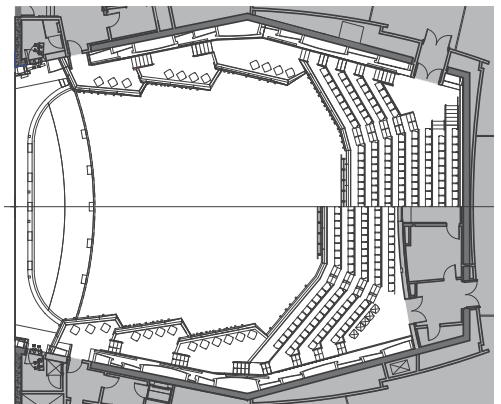
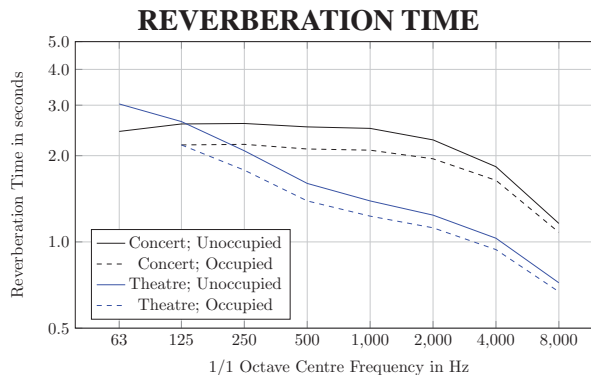
\$ 82 Million (U.S.)

With its large stage, fly tower, concert hall-quality sound reflection panel system, an orchestra pit that can accommodate 70 musicians and a proscenium-style stage, this hall fulfills the design intent of a multipurpose theatre that can adapt to the performance needs of many genres. Formally known as Julianne Argyros Orchestra Hall, the hall has a hexagonally-shaped footprint, with main floor audience seating, 2 tiers of balconies at the rear of the hall and 16 loge boxes at the sides of the stage. The proscenium opening measures 19x11m (62x36ft). A shell system was designed to provide appropriate acoustic reflections for classical music performances and to visually contribute to the feeling of continuity between audience and stage. When combined with the hall's steel frame and equipment for lighting, these elements have a total weight of 55,000kg (120,000lbs).



ORCHESTRA PLAN

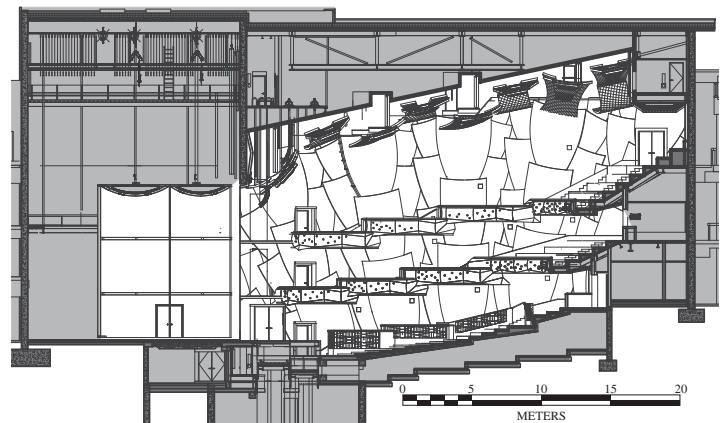
To adapt the hall's sound reverberation characteristic for performances that use electro-acoustic equipment, motorized, sound-absorbing curtains can be unfurled between the petal-shaped, three-dimensional wall elements on the side walls of the hall. On the ceiling, the curtains can be deployed horizontally along lighting bridges.



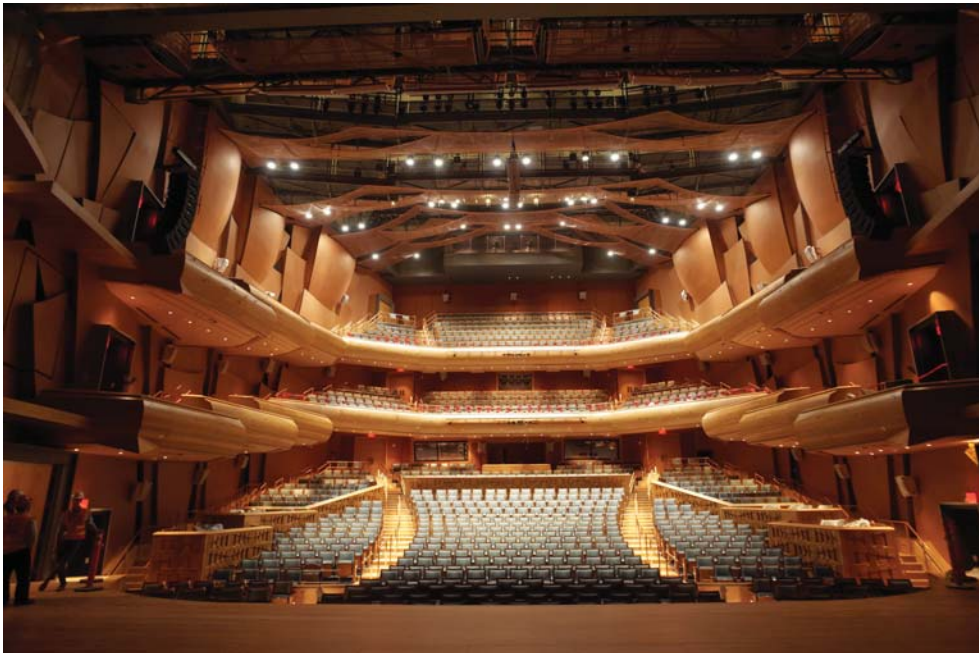
2ND & 3RD LEVEL PLAN

BUILDING DETAILS AND ACOUSTICAL DATA

Location	One University Dr. Chapman University Orange, California, U.S.A.
Seating Capacity:	1,044
Room Volume:	12,800 m ³
Reverberation Time:	(500Hz Octave Band, Concert Configuration)
Unoccupied:	2.5 seconds
Occupied:	2.1 seconds
Finish Materials:	
Ceiling, Envelope, Walls:	Plaster on metal lath
Orchestra Shell:	Plywood layers with veneer
Stage Floor:	Alaskan Yellow Cedar



LONGITUDINAL SECTION



Counter-clockwise from Top

- View from second balcony; Orchestra shell configuration
- View from stage
- View from second balcony; Proscenium theatre configuration
- Public approach to building

