

# ART SPHERE

TOKYO, JAPAN

NAGATA  
ACOUSTICS

ACOUSTICS CONSULTANT:

Nagata Acoustics, Inc.

AUDIO SYSTEMS / SOUND & COMMUNICATIONS:

Nagata Acoustics, Inc.

OWNER:

Mitsubishi Corporation

ARCHITECT:

Research Institute of Architecture

THEATER CONSULTANT:

Theatre Workshop

CONSTRUCTION COST:

23,000 Million JPY

COMPLETION DATE:

1992

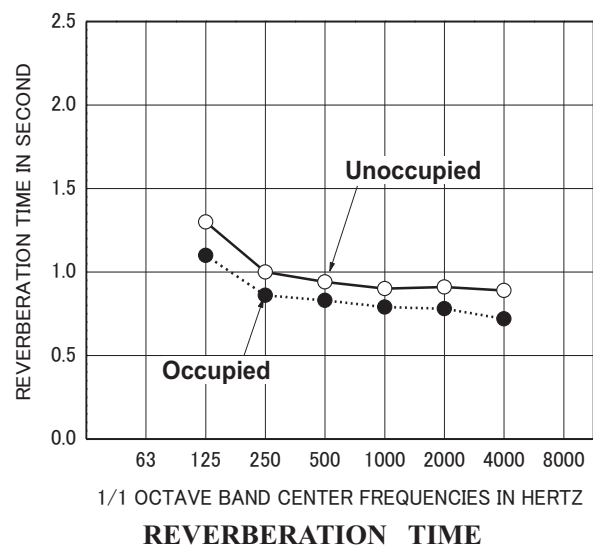
The Art Sphere Theatre opened in 1992 as a cultural symbol and as a part of the redevelopment project, "Sea Fort Square." It is conveniently located in Shinagawa, the coastal area of central Tokyo. The theatre presents a wide variety of programming, such as plays, musicals, dance, and Japanese traditional performances. Art Sphere is a horseshoe-shaped theatre with two balcony levels. The main features of the theatre include the rigging system controlled by computers, the stage floor, which is accessible anywhere from underneath by removing the panels, and the sound system with large loudspeakers hanging from the ceiling for sound effects. The most notable feature of this theatre is the proximity of the stage to the audience area. The farthest seat is only 20 meters from the stage; therefore, the stage is very close to any seats in the house, and the sightline is excellent. Wood is used as the main interior material, and it creates a

nice, comfortable atmosphere. The theatre was re-opened in 2006 with the new name of "The Galaxy Theatre" after the refurbishment.



## CRITICAL DATA

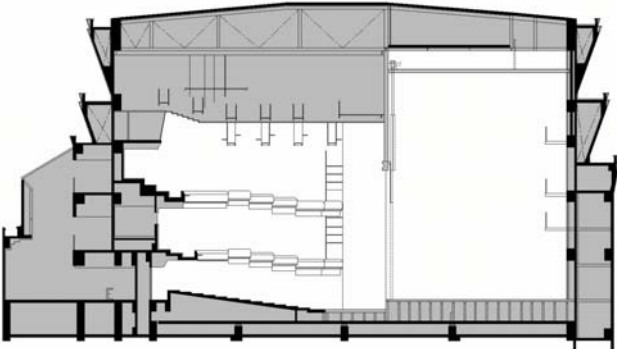
Seating Capacity	746
Room Volume	6,300 m <sup>3</sup>
Reverberation Time (Mid-Frequency)	
Unoccupied	0.9 sec
Occupied	0.8 sec
Noise Level	NC - 25
RASTI	0.57 - 0.8



# ART SPHERE

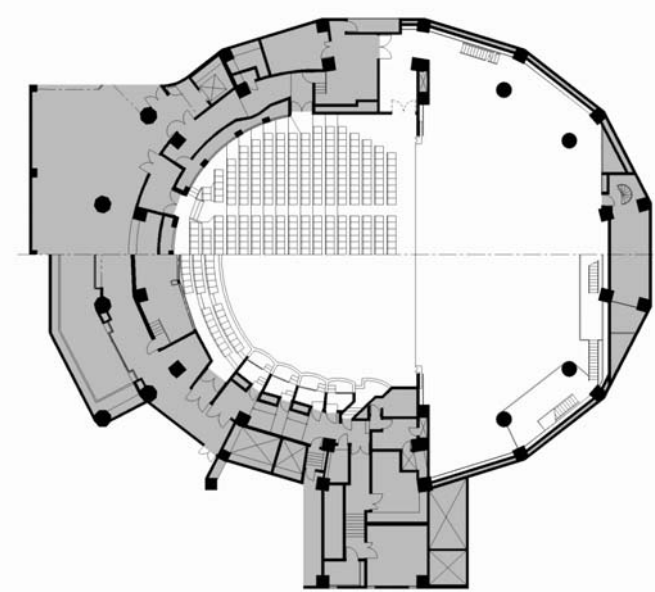
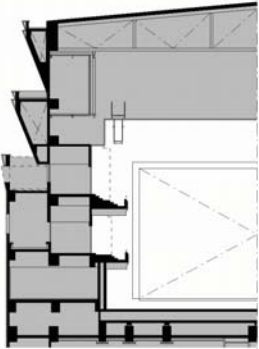
TOKYO, JAPAN

LONGITUDINAL SECTION



5 0 10 20 30 METERS

TRANSVERSE SECTION



PLAN

